

Application Process

The Astronomy Camp application (available on the Internet at <http://astro.unl.edu>) consists of two parts. The student will need to fill out a personal information section which includes a short essay, which should be about one page in length. A reference section will then need to be given to a high school staff member (teacher, guidance counselor, or principal) to have them fill out an evaluation of the student. Both sections should be mailed to the UNL address below.

Astronomy Summer Camp

c/o Shannon Parry
Center for Science, Mathematics
& Computer Education
251 Avery Hall
University of Nebraska-Lincoln
Lincoln, NE 68588-0131

Please submit your application by May 15, 2009. Although applications will continue to be accepted until June 1, we will begin offering students places in the camp on May 15th. Students will be informed by mail whether their application has been accepted. Accepted students will then have until Friday, June 5, 2009 to submit their camp enrollment fee (\$100 in-state, \$150 out-of-state). Once the enrollment fee has been received by UNL, a place in the camp will be reserved for the student. If the enrollment fee is not received by June 5, this opening will be offered to another applicant. A maximum of 20 campers will be accepted.



Behlen Observatory

Behlen Observatory is located 38 miles northeast of Lincoln near Mead, Nebraska. The original building was part of a WWII and Korean War ordinance plant. The silo and dome were added on in the early 1970's when the telescope was purchased with a donation from Walter Behlen. The telescope is a 30-inch Cessegrain reflector equipped with a modern CCD camera. It is primary used for variable star research. Students that attend Astronomy Camp will be using this research class telescope to complete projects to present to their parents at the end of camp send-off.

More images and information on Behlen Observatory can be found on our web site at:

<http://astro.unl.edu>.

Camp Sponsors

The UNL Astronomy Camp is sponsored by the Center for Science, Mathematics & Computer Education (CSMCE) and the UNL Department of Physics and Astronomy.

The CSMCE supports a broad range of activities from outreach programs for K-12 students to professional development opportunities for graduate students and is online at:

<http://scimath.unl.edu/csmce/>

University of Nebraska-Lincoln presents

2009 High School Astronomy Camp

Observing the Night Sky



July 12 through July 18

University of Nebraska-Lincoln Campus

More information can be found at

<http://astro.unl.edu>



Camp Details

The camp will be held on the City Campus of the University of Nebraska - Lincoln. Students will sleep and eat their meals in a UNL dormitory. Daytime classes and laboratories will be held in the classrooms of Brace Lab and Ferguson Halls.



When:

Dormitory check-in will begin on Sunday, July 12 at 12 pm. The camp will conclude at Noon on Saturday, July 18.

What:

During daytime classes we will work to develop an understanding of the positions and motions of objects in the sky. This will emphasize the use of astronomical coordinate systems. Activities will include kit building and working with computer simulations. Nighttime activities will include preparatory lectures on telescope and CCD usage followed by considerable observing with the UNL telescopes.



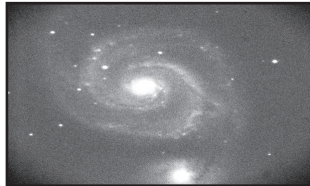
Cost:

Once a student's application to the camp has been approved, the student is required to pay an enrollment fee (\$100 in-state, \$150 out-of-state) to reserve his/her spot in the camp. The enrollment fee covers only part of the camp expenses; the remainder of the housing and meal costs and all instructional costs are covered by the UNL Center for Science,

Facilities

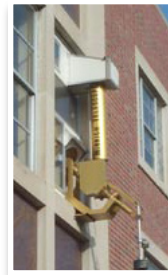
The UNL Department of Physics and Astronomy is uniquely suited to offer such a camp.

- ① Behlen Observatory houses a 30-inch reflector and CCD system which is used extensively for research. See picture on back page.



Left is a picture of the whirlpool Galaxy, M51, taken at Behlen Observatory.

- ① The UNL Student Observatory houses a 16-inch reflector and CCD system that is conveniently located on the UNL campus.
- ① The Minnich Telescope is mounted on the side of Ferguson Hall. It is equipped with an H-alpha filter which allows safe viewing of the sun. It is commonly possible to view sunspots and solar prominences.
- ① The Ralph Mueller Planetarium is located in Morrill Hall. Students will attend a planetarium show during the camp.



Observing sessions will be held each clear night of the camp. Students will be divided into three rotating groups using Behlen Observatory, the Student Observatory, and smaller telescopes.

Camp Personnel

Camp Co-Director:

Shawn Langan is the Introductory Physics lab manager and instructor to first year Astronomy and Physics students. He has 10 years instructional experience and is in charge of a vast array of physics experiments which relate to astronomical observing. Shawn is finishing post-graduate work on short-period Cepheid variable stars and has coordinated many outreach activities to bring scientific interest to the public.

Camp Co-Director:

Dr. Kevin M. Lee is a Research Associate Professor in the Department of Physics and the Coordinator of Behlen Observatory. He regularly teaches Descriptive Astronomy, Elements of Physics, and Optics. His research focuses on astronomy education (developing interactive components for teaching astronomy and assessing their effectiveness) and variable star astronomy (multi-periodic pulsating stars).

Contact Person:

Shannon Parry is the Event Coordinator for the UNL Center for Science, Mathematics & Computer Education. Please direct any questions that you have about Astronomy Camp to Shannon at:

Phone: 402-472-9312
E-mail: sparry3@unl.edu
FAX: 402-472-9311